

---

## Product Specifications

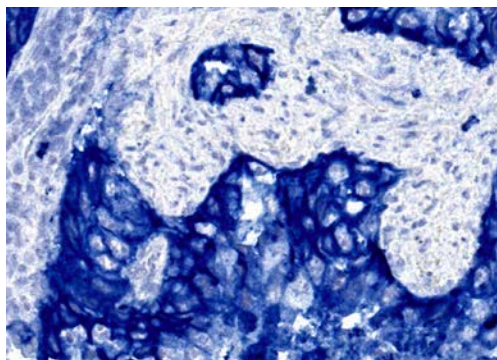
### Cell Palette Blue HRP Chromogen Kit

Description: Blue chromogen for use with HRP enzyme labeled IHC detection systems  
Cat. No.: CPHB-050  
Amount: 50 mL  
Application: IHC

#### Product Specifications

Components: Cell Palette Blue HRP chromogen (50X) and substrate buffer (1X).  
Storage: Chromogen – store at 4°C  
Buffer – for maximum shelf-life store at 4°C. Allow buffer to warm to room temperature prior to use.  
Shelf-Life: 12 months at 4°C  
Instructions: For each 1.0 mL chromogen working solution add 20 µL Chromogen to 980 µL Buffer. Once prepared, the Blue chromogen working solution is stable for 6 hours. Incubate slides for five minutes or until desired intensity has been achieved.  
**Compatible with aqueous mounting medium. Alternatively use ChromoSealant (cat# CS-015) to seal stain followed by resin-based mounting medium. This chromogen is soluble in alcohol and xylenes.**

Image: **PD-L1 (Blue)** staining  
of FFPE Human Lung  
Adenocarcinoma Tissue



Disclaimer: *For In vitro Research Use Only. Not for diagnostic or therapeutic use. Suggested applications of our products are not recommendations to use our products in violation of any patent or as a license under any patent of Cell IDx, Inc. Product may not be resold or modified for resale without prior written approval of Cell IDx, Inc.*